



## Data Development and Use

Presented by

Collette Adamsen, National Resource Center on Native American Aging (NRCNAA)

Kristen (Krissy) Hudgins, Administration for Community Living (ACL)

August 15, 2018



## Overview

- Welcome and Introduction
- Describe NRCNAA Elder Needs Assessment
- How to read your NRCNAA Elder Needs Assessment data
- Overview of NRCNAA Elder Needs Assessment data trends
- Describe Title VI PPR data collection
- How to get to Title VI PPR trend data
- How to read your PPR data/discuss data issues
- Questions

## Session Goals

- Describe the data
- Review how to read your data
- How to provide better data



## Why is Data Important?

- Today, many decisions are based on data; therefore, populations with little or no data are easily overlooked (Urban Indian Health Commission, 2007).
- Provides an accurate picture of the Native elder population
  - Collecting custom fit data
- Helps set goals and priorities
- Identifies specific areas of health and social needs
  - Resource allocation
- Relevant actionable data
  - Assists policymakers, tribal leadership, directorship, and management make decisions based on facts and numbers.

## Data Challenges

- Data not being readily available to tribes.
- Significant gaps in data.
- National data sets are skewed due to misclassification of race/ethnicity.
- Small sample size in some cases.
- Unreliable

(Urban Indian Health Commission, 2007)

## National Resource Center on Native American Aging (NRCNAA)

### **IDENTIFYING OUR NEEDS: A SURVEY OF ELDERS**



## **NRCNAA**

### **Programs and Resources**

- *Identifying Our Needs: A Survey of Elders (ION)*
- WELL (Wise Elders Living Longer) Balanced Program
- Native Elder Caregiver Curriculum (NECC)
- Service Locator Map
- Heroes Project



## **Mission and Vision**

### **Mission**

Identify and increase awareness of evolving Native elder health and social issues.

### **Vision**

To empower Native people to develop community based solution.

Honoring and helping to maintain cultural values.

## Why is the ION Data Important?

- Fulfill Title VI grant requirements
- Other funding opportunities
  - Secure funding and additional resources for Native elders

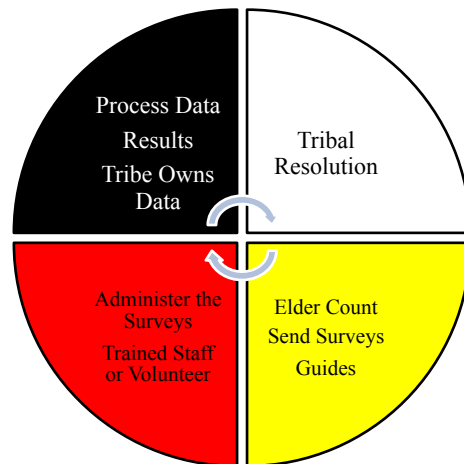
**\*MOST IMPORTANT\***  
**USE THE DATA**

## *Identifying Our Needs: A Survey of Elders*

- Assesses the health and social needs of Native Elders in Tribal Communities
- 3 year cycles
- Opportunity to collect information for their communities
- Technical assistance and training



## NRCNAA Research Model



## Cycle VI Summary


- Data collected in the time span of April 1, 2014 to March 31, 2017
- 18,134 AI/AN elders
- 164 sites
- 267 tribes
- Representation from:
  - 11 out of 12 Indian Health Service (IHS) Regions
  - 9 out of 10 Department of Health and Human Services (DHHS) regions
  - 28 out of 50 states

\*Cycle VII began April 1, 2017 and will end March 31, 2020

## Survey Needs Data

- General health status of elders
- Indicators of chronic health
- Activities of Daily Living (ADL's)
- Screenings
- Indicators of visual, hearing, and dental
- Memory and Disability
- Health Care Access
- Tobacco and alcohol use patterns
- Diet, nutrition, and exercise
- Social support pattern and housing
- Social Functioning
- Use and acceptance of services
- Demographics

## Identifying our Needs: A Survey of Elders VII



Funding for this project is provided by Cooperative Agreement HHSN261-2007-0001-0001 from the Administration for Community Living, ADA - Older Americans Resource Center (for agency within the US Department of Health and Human Services).

• Use black or blue pen or a number 2 pencil.  
 • Make dark marks that fill the oval completely.  
 • Do not use pens with ink that smears through the paper.  
 • Make an X mark on the right side of the page.

### GENERAL HEALTH STATUS

1. Would you say your health is general, excellent, very good, good, fair, or poor?

☐ Excellent  
☐ Very good  
☐ Good  
☐ Fair  
☐ Poor

2. During the past 12 months, how many different times did you skip in the hospital overnight or longer?

☐ None  
☐ 1  
☐ 2  
☐ 3  
☐ 4  
☐ 5  
☐ 6  
☐ 7  
☐ 8  
☐ 9  
☐ 10  
☐ 11  
☐ 12  
☐ 13  
☐ 14  
☐ 15  
☐ 16  
☐ 17  
☐ 18  
☐ 19  
☐ 20  
☐ 21  
☐ 22  
☐ 23  
☐ 24  
☐ 25  
☐ 26  
☐ 27  
☐ 28  
☐ 29  
☐ 30  
☐ 31  
☐ 32  
☐ 33  
☐ 34  
☐ 35  
☐ 36  
☐ 37  
☐ 38  
☐ 39  
☐ 40  
☐ 41  
☐ 42  
☐ 43  
☐ 44  
☐ 45  
☐ 46  
☐ 47  
☐ 48  
☐ 49  
☐ 50  
☐ 51  
☐ 52  
☐ 53  
☐ 54  
☐ 55  
☐ 56  
☐ 57  
☐ 58  
☐ 59  
☐ 60  
☐ 61  
☐ 62  
☐ 63  
☐ 64  
☐ 65  
☐ 66  
☐ 67  
☐ 68  
☐ 69  
☐ 70  
☐ 71  
☐ 72  
☐ 73  
☐ 74  
☐ 75  
☐ 76  
☐ 77  
☐ 78  
☐ 79  
☐ 80  
☐ 81  
☐ 82  
☐ 83  
☐ 84  
☐ 85  
☐ 86  
☐ 87  
☐ 88  
☐ 89  
☐ 90  
☐ 91  
☐ 92  
☐ 93  
☐ 94  
☐ 95  
☐ 96  
☐ 97  
☐ 98  
☐ 99  
☐ 100

3. Has a doctor ever told you that you had any of the following diseases? (Please mark all that apply.)

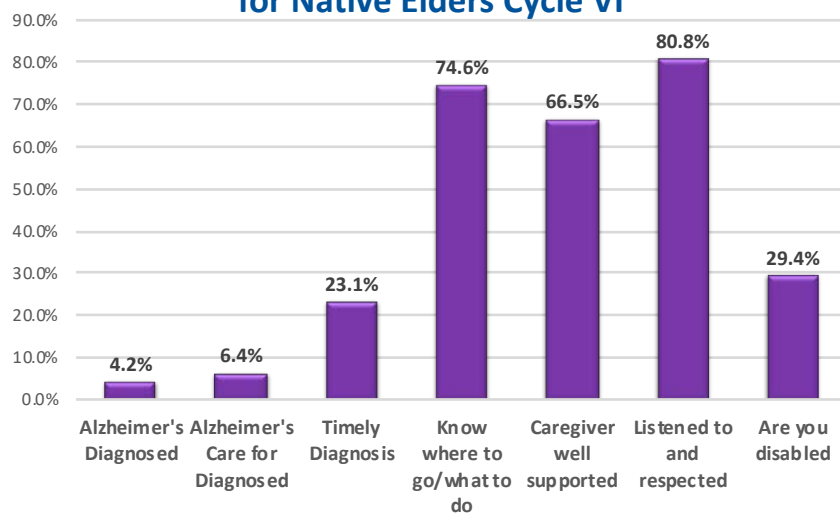
☐ Diabetes  
☐ Heart Disease  
☐ Stroke  
☐ Lung Cancer  
☐ Breast Cancer  
☐ Prostate Cancer  
☐ Kidney Disease  
☐ Arthritis  
☐ Osteoporosis  
☐ Depression  
☐ Anxiety  
☐ Alzheimer's  
☐ Parkinson's  
☐ Multiple Sclerosis  
☐ HIV/AIDS  
☐ AIDS  
☐ Hepatitis  
☐ Tuberculosis  
☐ Syphilis  
☐ Gonorrhea  
☐ Chlamydia  
☐ Herpes  
☐ HIV/AIDS  
☐ AIDS  
☐ Hepatitis  
☐ Tuberculosis  
☐ Syphilis  
☐ Gonorrhea  
☐ Chlamydia  
☐ Herpes  
☐ HIV/AIDS  
☐ AIDS  
☐ Hepatitis  
☐ Tuberculosis  
☐ Syphilis  
☐ Gonorrhea  
☐ Chlamydia  
☐ Herpes  
☐ HIV/AIDS  
☐ AIDS  
☐ Hepatitis  
☐ Tuberculosis  
☐ Syphilis  
☐ Gonorrhea  
☐ Chlamydia  
☐ Herpes  
☐ HIV/AIDS  
☐ AIDS  
☐ Hepatitis  
☐ Tuberculosis  
☐ Syphilis  
☐ Gonorrhea  
☐ Chlamydia  
☐ Herpes  
☐ HIV/AIDS  
☐ AIDS  
☐ Hepatitis  
☐ Tuberculosis  
☐ Syphilis  
☐ Gonorrhea  
☐ Chlamydia  
☐ Herpes  
☐ HIV/AIDS  
☐ AIDS  
☐ Hepatitis  
☐ Tuberculosis  
☐ Syphilis  
☐ Gonorrhea  
☐ Chlamydia  
☐ Herpes  
☐ HIV/AIDS  
☐ AIDS  
☐ Hepatitis  
☐ Tuberculosis  
☐ Syphilis  
☐ Gonorrhea  
☐ Chlamydia  
☐ Herpes  
☐ HIV/AIDS  
☐ AIDS  
☐ Hepatitis  
☐ Tuberculosis  
☐ Syphilis  
☐ Gonorrhea  
☐ Chlamydia  
☐ Herpes  
☐ HIV/AIDS  
☐ AIDS  
☐ Hepatitis  
☐ Tuberculosis  
☐ Syphilis  
☐ Gonorrhea  
☐ Chlamydia  
☐ Herpes  
☐ HIV/AIDS  
☐ AIDS  
☐ Hepatitis  
☐ Tuberculosis  
☐ Syphilis  
☐ Gonorrhea  
☐ Chlamydia  
☐ Herpes  
☐ HIV/AIDS  
☐ AIDS  
☐ Hepatitis  
☐ Tuberculosis  
☐ Syphilis  
☐ Gonorrhea  
☐ Chlamydia  
☐ Herpes  
☐ HIV/AIDS  
☐ AIDS  
☐ Hepatitis  
☐ Tuberculosis  
☐ Syphilis  
☐ Gonorrhea  
☐ Chlamydia  
☐ Herpes  
☐ HIV/AIDS  
☐ AIDS  
☐ Hepatitis  
☐ Tuberculosis  
☐ Syphilis  
☐ Gonorrhea  
☐ Chlamydia  
☐ Herpes  
☐ HIV/AIDS  
☐ AIDS  
☐ Hepatitis  
☐ Tuberculosis  
☐ Syphilis  
☐ Gonorrhea  
☐ Chlamydia  
☐ Herpes  
☐ HIV/AIDS  
☐ AIDS  
☐ Hepatitis  
☐ Tuberculosis  
☐ Syphilis  
☐ Gonorrhea  
☐ Chlamydia  
☐ Herpes  
☐ HIV/AIDS  
☐ AIDS  
☐ Hepatitis  
☐ Tuberculosis  
☐ Syphilis  
☐ Gonorrhea  
☐ Chlamydia  
☐ Herpes  
☐ HIV/AIDS  
☐ AIDS  
☐ Hepatitis  
☐ Tuberculosis  
☐ Syphilis  
☐ Gonorrhea  
☐ Chlamydia  
☐ Herpes  
☐ HIV/AIDS  
☐ AIDS  
☐ Hepatitis  
☐ Tuberculosis  
☐ Syphilis  
☐ Gonorrhea  
☐ Chlamydia  
☐ Herpes  
☐ HIV/AIDS  
☐ AIDS  
☐ Hepatitis  
☐ Tuberculosis  
☐ Syphilis  
☐ Gonorrhea  
☐ Chlamydia  
☐ Herpes  
☐ HIV/AIDS  
☐ AIDS  
☐ Hepatitis  
☐ Tuberculosis  
☐ Syphilis  
☐ Gonorrhea  
☐ Chlamydia  
☐ Herpes  
☐ HIV/AIDS  
☐ AIDS  
☐ Hepatitis  
☐ Tuberculosis  
☐ Syphilis  
☐ Gonorrhea  
☐ Chlamydia  
☐ Herpes  
☐ HIV/AIDS  
☐ AIDS  
☐ Hepatitis  
☐ Tuberculosis  
☐ Syphilis  
☐ Gonorrhea  
☐ Chlamydia  
☐ Herpes  
☐ HIV/AIDS  
☐ AIDS  
☐ Hepatitis  
☐ Tuberculosis  
☐ Syphilis  
☐ Gonorrhea  
☐ Chlamydia  
☐ Herpes  
☐ HIV/AIDS  
☐ AIDS  
☐ Hepatitis  
☐ Tuberculosis  
☐ Syphilis  
☐ Gonorrhea  
☐ Chlamydia  
☐ Herpes  
☐ HIV/AIDS  
☐ AIDS  
☐ Hepatitis  
☐ Tuberculosis  
☐ Syphilis  
☐ Gonorrhea  
☐ Chlamydia  
☐ Herpes  
☐ HIV/AIDS  
☐ AIDS  
☐ Hepatitis  
☐ Tuberculosis  
☐ Syphilis  
☐ Gonorrhea  
☐ Chlamydia  
☐ Herpes  
☐ HIV/AIDS  
☐ AIDS  
☐ Hepatitis  
☐ Tuberculosis  
☐ Syphilis  
☐ Gonorrhea  
☐ Chlamydia  
☐ Herpes  
☐ HIV/AIDS  
☐ AIDS  
☐ Hepatitis  
☐ Tuberculosis  
☐ Syphilis  
☐ Gonorrhea  
☐ Chlamydia  
☐ Herpes  
☐ HIV/AIDS  
☐ AIDS  
☐ Hepatitis  
☐ Tuberculosis  
☐ Syphilis  
☐ Gonorrhea  
☐ Chlamydia  
☐ Herpes  
☐ HIV/AIDS  
☐ AIDS  
☐ Hepatitis  
☐ Tuberculosis  
☐ Syphilis  
☐ Gonorrhea  
☐ Chlamydia  
☐ Herpes  
☐ HIV/AIDS  
☐ AIDS  
☐ Hepatitis  
☐ Tuberculosis  
☐ Syphilis  
☐ Gonorrhea  
☐ Chlamydia  
☐ Herpes  
☐ HIV/AIDS  
☐ AIDS  
☐ Hepatitis  
☐ Tuberculosis  
☐ Syphilis  
☐ Gonorrhea  
☐ Chlamydia  
☐ Herpes  
☐ HIV/AIDS  
☐ AIDS  
☐ Hepatitis  
☐ Tuberculosis  
☐ Syphilis  
☐ Gonorrhea  
☐ Chlamydia  
☐ Herpes  
☐ HIV/AIDS  
☐ AIDS  
☐ Hepatitis  
☐ Tuberculosis  
☐ Syphilis  
☐ Gonorrhea  
☐ Chlamydia  
☐ Herpes  
☐ HIV/AIDS  
☐ AIDS  
☐ Hepatitis  
☐ Tuberculosis  
☐ Syphilis  
☐ Gonorrhea  
☐ Chlamydia  
☐ Herpes  
☐ HIV/AIDS  
☐ AIDS  
☐ Hepatitis  
☐ Tuberculosis  
☐ Syphilis  
☐ Gonorrhea  
☐ Chlamydia  
☐ Herpes  
☐ HIV/AIDS  
☐ AIDS  
☐ Hepatitis  
☐ Tuberculosis  
☐ Syphilis  
☐ Gonorrhea  
☐ Chlamydia  
☐ Herpes  
☐ HIV/AIDS  
☐ AIDS  
☐ Hepatitis  
☐ Tuberculosis  
☐ Syphilis  
☐ Gonorrhea  
☐ Chlamydia  
☐ Herpes  
☐ HIV/AIDS  
☐ AIDS  
☐ Hepatitis  
☐ Tuberculosis  
☐ Syphilis  
☐ Gonorrhea  
☐ Chlamydia  
☐ Herpes  
☐ HIV/AIDS  
☐ AIDS  
☐ Hepatitis  
☐ Tuberculosis  
☐ Syphilis  
☐ Gonorrhea  
☐ Chlamydia  
☐ Herpes  
☐ HIV/AIDS  
☐ AIDS  
☐ Hepatitis  
☐ Tuberculosis  
☐ Syphilis  
☐ Gonorrhea  
☐ Chlamydia  
☐ Herpes  
☐ HIV/AIDS  
☐ AIDS  
☐ Hepatitis  
☐ Tuberculosis  
☐ Syphilis  
☐ Gonorrhea  
☐ Chlamydia  
☐ Herpes  
☐ HIV/AIDS  
☐ AIDS  
☐ Hepatitis  
☐ Tuberculosis  
☐ Syphilis  
☐ Gonorrhea  
☐ Chlamydia  
☐ Herpes  
☐ HIV/AIDS  
☐ AIDS  
☐ Hepatitis  
☐ Tuberculosis  
☐ Syphilis  
☐ Gonorrhea  
☐ Chlamydia  
☐ Herpes  
☐ HIV/AIDS  
☐ AIDS  
☐ Hepatitis  
☐ Tuberculosis  
☐ Syphilis  
☐ Gonorrhea  
☐ Chlamydia  
☐ Herpes  
☐ HIV/AIDS  
☐ AIDS  
☐ Hepatitis  
☐ Tuberculosis  
☐ Syphilis  
☐ Gonorrhea  
☐ Chlamydia  
☐ Herpes  
☐ HIV/AIDS  
☐ AIDS  
☐ Hepatitis  
☐ Tuberculosis  
☐ Syphilis  
☐ Gonorrhea  
☐ Chlamydia  
☐ Herpes  
☐ HIV/AIDS  
☐ AIDS  
☐ Hepatitis  
☐ Tuberculosis  
☐ Syphilis  
☐ Gonorrhea  
☐ Chlamydia  
☐ Herpes  
☐ HIV/AIDS  
☐ AIDS  
☐ Hepatitis  
☐ Tuberculosis  
☐ Syphilis  
☐ Gonorrhea  
☐ Chlamydia  
☐ Herpes  
☐ HIV/AIDS  
☐ AIDS  
☐ Hepatitis  
☐ Tuberculosis  
☐ Syphilis  
☐ Gonorrhea  
☐ Chlamydia  
☐ Herpes  
☐ HIV/AIDS  
☐ AIDS  
☐ Hepatitis  
☐ Tuberculosis  
☐ Syphilis  
☐ Gonorrhea  
☐ Chlamydia  
☐ Herpes  
☐ HIV/AIDS  
☐ AIDS  
☐ Hepatitis  
☐ Tuberculosis  
☐ Syphilis  
☐ Gonorrhea  
☐ Chlamydia  
☐ Herpes  
☐ HIV/AIDS  
☐ AIDS  
☐ Hepatitis  
☐ Tuberculosis  
☐ Syphilis  
☐ Gonorrhea  
☐ Chlamydia  
☐ Herpes  
☐ HIV/AIDS  
☐ AIDS  
☐ Hepatitis  
☐ Tuberculosis  
☐ Syphilis  
☐ Gonorrhea  
☐ Chlamydia  
☐ Herpes  
☐ HIV/AIDS  
☐ AIDS  
☐ Hepatitis  
☐ Tuberculosis  
☐ Syphilis  
☐ Gonorrhea  
☐ Chlamydia  
☐ Herpes  
☐ HIV/AIDS  
☐ AIDS  
☐ Hepatitis  
☐ Tuberculosis  
☐ Syphilis  
☐ Gonorrhea  
☐ Chlamydia  
☐ Herpes  
☐ HIV/AIDS  
☐ AIDS  
☐ Hepatitis  
☐ Tuberculosis  
☐ Syphilis  
☐ Gonorrhea  
☐ Chlamydia  
☐ Herpes  
☐ HIV/AIDS  
☐ AIDS  
☐ Hepatitis  
☐ Tuberculosis  
☐ Syphilis  
☐ Gonorrhea  
☐ Chlamydia  
☐ Herpes  
☐ HIV/AIDS  
☐ AIDS  
☐ Hepatitis  
☐ Tuberculosis  
☐ Syphilis  
☐ Gonorrhea  
☐ Chlamydia  
☐ Herpes  
☐ HIV/AIDS  
☐ AIDS  
☐ Hepatitis  
☐ Tuberculosis  
☐ Syphilis  
☐ Gonorrhea  
☐ Chlamydia  
☐ Herpes  
☐ HIV/AIDS  
☐ AIDS  
☐ Hepatitis  
☐ Tuberculosis  
☐ Syphilis  
☐ Gonorrhea  
☐ Chlamydia  
☐ Herpes  
☐ HIV/AIDS  
☐ AIDS  
☐ Hepatitis  
☐ Tuberculosis  
☐ Syphilis  
☐ Gonorrhea  
☐ Chlamydia  
☐ Herpes  
☐ HIV/AIDS  
☐ AIDS  
☐ Hepatitis  
☐ Tuberculosis  
☐ Syphilis  
☐ Gonorrhea  
☐ Chlamydia  
☐ Herpes  
☐ HIV/AIDS  
☐ AIDS  
☐ Hepatitis  
☐ Tuberculosis  
☐ Syphilis  
☐ Gonorrhea  
☐ Chlamydia  
☐ Herpes  
☐ HIV/AIDS  
☐ AIDS  
☐ Hepatitis  
☐ Tuberculosis  
☐ Syphilis  
☐ Gonorrhea  
☐ Chlamydia  
☐ Herpes  
☐ HIV/AIDS  
☐ AIDS  
☐ Hepatitis  
☐ Tuberculosis  
☐ Syphilis  
☐ Gonorrhea  
☐ Chlamydia  
☐ Herpes  
☐ HIV/AIDS  
☐ AIDS  
☐ Hepatitis  
☐ Tuberculosis  
☐ Syphilis  
☐ Gonorrhea  
☐ Chlamydia  
☐ Herpes  
☐ HIV/AIDS  
☐ AIDS  
☐ Hepatitis  
☐ Tuberculosis  
☐ Syphilis  
☐ Gonorrhea  
☐ Chlamydia  
☐ Herpes  
☐ HIV/AIDS  
☐ AIDS  
☐ Hepatitis  
☐ Tuberculosis  
☐ Syphilis  
☐ Gonorrhea  
☐ Chlamydia  
☐ Herpes  
☐ HIV/AIDS  
☐ AIDS  
☐ Hepatitis  
☐ Tuberculosis  
☐ Syphilis  
☐ Gonorrhea  
☐ Chlamydia  
☐ Herpes  
☐ HIV/AIDS  
☐ AIDS  
☐ Hepatitis  
☐ Tuberculosis  
☐ Syphilis  
☐ Gonorrhea  
☐ Chlamydia  
☐ Herpes  
☐ HIV/AIDS  
☐ AIDS  
☐ Hepatitis  
☐ Tuberculosis  
☐ Syphilis  
☐ Gonorrhea  
☐ Chlamydia  
☐ Herpes  
☐ HIV/AIDS  
☐ AIDS  
☐ Hepatitis  
☐ Tuberculosis  
☐ Syphilis  
☐ Gonorrhea  
☐ Chlamydia  
☐ Herpes  
☐ HIV/AIDS  
☐ AIDS  
☐ Hepatitis  
☐ Tuberculosis  
☐ Syphilis  
☐ Gonorrhea  
☐ Chlamydia  
☐ Herpes  
☐ HIV/AIDS  
☐ AIDS  
☐ Hepatitis  
☐ Tuberculosis  
☐ Syphilis  
☐ Gonorrhea  
☐ Chlamydia  
☐ Herpes  
☐ HIV/AIDS  
☐ AIDS  
☐ Hepatitis  
☐ Tuberculosis  
☐ Syphilis  
☐ Gonorrhea  
☐ Chlamydia  
☐ Herpes  
☐ HIV/AIDS  
☐ AIDS  
☐ Hepatitis  
☐ Tuberculosis  
☐ Syphilis  
☐ Gonorrhea  
☐ Chlamydia  
☐ Herpes  
☐ HIV/AIDS  
☐ AIDS  
☐ Hepatitis  
☐ Tuberculosis  
☐ Syphilis  
☐ Gonorrhea  
☐ Chlamydia  
☐ Herpes  
☐ HIV/AIDS  
☐ AIDS  
☐ Hepatitis  
☐ Tuberculosis  
☐ Syphilis  
☐ Gonorrhea  
☐ Chlamydia  
☐ Herpes  
☐ HIV/AIDS  
☐ AIDS  
☐ Hepatitis  
☐ Tuberculosis  
☐ Syphilis  
☐ Gonorrhea  
☐ Chlamydia  
☐ Herpes  
☐ HIV/AIDS  
☐ AIDS  
☐ Hepatitis  
☐ Tuberculosis  
☐ Syphilis  
☐ Gonorrhea  
☐ Chlamydia  
☐ Herpes  
☐ HIV/AIDS  
☐ AIDS  
☐ Hepatitis  
☐ Tuberculosis  
☐ Syphilis  
☐ Gonorrhea  
☐ Chlamydia  
☐ Herpes  
☐ HIV/AIDS  
☐ AIDS  
☐ Hepatitis  
☐ Tuberculosis  
☐ Syphilis  
☐ Gonorrhea  
☐ Chlamydia  
☐ Herpes  
☐ HIV/AIDS  
☐ AIDS  
☐ Hepatitis  
☐ Tuberculosis  
☐ Syphilis  
☐ Gonorrhea  
☐ Chlamydia  
☐ Herpes  
☐ HIV/AIDS  
☐ AIDS  
☐ Hepatitis  
☐ Tuberculosis  
☐ Syphilis  
☐ Gonorrhea  
☐ Chlamydia  
☐ Herpes  
☐ HIV/AIDS  
☐ AIDS  
☐ Hepatitis  
☐ Tuberculosis  
☐ Syphilis  
☐ Gonorrhea  
☐ Chlamydia  
☐ Herpes  
☐ HIV/AIDS  
☐ AIDS  
☐ Hepatitis  
☐ Tuberculosis  
☐ Syphilis  
☐ Gonorrhea  
☐ Chlamydia  
☐ Herpes  
☐ HIV/AIDS  
☐ AIDS  
☐ Hepatitis  
☐ Tuberculosis  
☐ Syphilis  
☐ Gonorrhea  
☐ Chlamydia  
☐ Herpes  
☐ HIV/AIDS  
☐ AIDS  
☐ Hepatitis  
☐ Tuberculosis  
☐ Syphilis  
☐ Gonorrhea  
☐ Chlamydia  
☐ Herpes  
☐ HIV/AIDS  
☐ AIDS  
☐ Hepatitis  
☐ Tuberculosis  
☐ Syphilis  
☐ Gonorrhea  
☐ Chlamydia  
☐ Herpes  
☐ HIV/AIDS  
☐ AIDS  
☐ Hepatitis  
☐ Tuberculosis  
☐ Syphilis  
☐ Gonorrhea  
☐ Chlamydia  
☐ Herpes  
☐ HIV/AIDS  
☐ AIDS  
☐ Hepatitis  
☐ Tuberculosis  
☐ Syphilis  
☐ Gonorrhea  
☐ Chlamydia  
☐ Herpes  
☐ HIV/AIDS  
☐ AIDS  
☐ Hepatitis  
☐ Tuberculosis  
☐ Syphilis  
☐ Gonorrhea  
☐ Chlamydia  
☐ Herpes  
☐ HIV/AIDS  
☐ AIDS  
☐ Hepatitis  
☐ Tuberculosis  
☐ Syphilis  
☐ Gonorrhea  
☐ Chlamydia  
☐ Herpes  
☐ HIV/AIDS  
☐ AIDS  
☐ Hepatitis  
☐ Tuberculosis  
☐ Syphilis  
☐ Gonorrhea  
☐ Chlamydia  
☐ Herpes  
☐ HIV/AIDS  
☐ AIDS  
☐ Hepatitis  
☐ Tuberculosis  
☐ Syphilis  
☐ Gonorrhea  
☐ Chlamydia  
☐ Herpes  
☐ HIV/AIDS  
☐ AIDS  
☐ Hepatitis  
☐ Tuberculosis  
☐ Syphilis  
☐ Gonorrhea  
☐ Chlamydia  
☐ Herpes  
☐ HIV/AIDS  
☐ AIDS  
☐ Hepatitis  
☐ Tuberculosis  
☐ Syphilis  
☐ Gonorrhea  
☐ Chlamydia  
☐ Herpes  
☐ HIV/AIDS  
☐ AIDS  
☐ Hepatitis  
☐ Tuberculosis  
☐ Syphilis  
☐ Gonorrhea  
☐ Chlamydia  
☐ Herpes  
☐ HIV/AIDS  
☐ AIDS  
☐ Hepatitis  
☐ Tuberculosis  
☐ Syphilis  
☐ Gonorrhea  
☐ Chlamydia  
☐ Herpes  
☐ HIV/AIDS  
☐ AIDS  
☐ Hepatitis  
☐ Tuberculosis  
☐ Syphilis  
☐ Gonorrhea  
☐ Chlamydia  
☐ Herpes  
☐ HIV/AIDS  
☐ AIDS  
☐ Hepatitis  
☐ Tuberculosis  
☐ Syphilis  
☐ Gonorrhea  
☐ Chlamydia  
☐ Herpes  
☐ HIV/AIDS  
☐ AIDS  
☐ Hepatitis  
☐ Tuberculosis  
☐ Syphilis  
☐ Gonorrhea  
☐ Chlamydia  
☐ Herpes  
☐ HIV/AIDS  
☐ AIDS  
☐ Hepatitis  
☐ Tuberculosis  
☐ Syphilis  
☐ Gonorrhea  
☐ Chlamydia  
☐ Herpes  
☐ HIV/AIDS  
☐ AIDS  
☐ Hepatitis  
☐ Tuberculosis  
☐ Syphilis  
☐ Gonorrhea  
☐ Chlamydia  
☐ Herpes  
☐ HIV/AIDS  
☐ AIDS  
☐ Hepatitis  
☐ Tuberculosis  
☐ Syphilis  
☐ Gonorrhea  
☐ Chlamydia  
☐ Herpes  
☐ HIV/AIDS  
☐ AIDS  
☐ Hepatitis  
☐ Tuberculosis  
☐ Syphilis  
☐ Gonorrhea  
☐ Chlamydia  
☐ Herpes  
☐ HIV/AIDS  
☐ AIDS  
☐ Hepatitis  
☐ Tuberculosis  
☐ Syphilis  
☐ Gonorrhea  
☐ Chlamydia  
☐ Herpes  
☐ HIV/AIDS  
☐ AIDS  
☐ Hepatitis  
☐ Tuberculosis  
☐ Syphilis  
☐ Gonorrhea  
☐ Chlamydia  
☐ Herpes  
☐ HIV/AIDS  
☐ AIDS  
☐ Hepatitis  
☐ Tuberculosis  
☐ Syphilis  
☐ Gonorrhea  
☐ Chlamydia  
☐ Herpes  
☐ HIV/AIDS  
☐ AIDS  
☐ Hepatitis  
☐ Tuberculosis  
☐ Syphilis  
☐ Gonorrhea  
☐ Chlamydia  
☐ Herpes  
☐ HIV/AIDS  
☐ AIDS  
☐ Hepatitis  
☐ Tuberculosis  
☐ Syphilis  
☐ Gonorrhea  
☐ Chlamydia  
☐ Herpes  
☐ HIV/AIDS  
☐ AIDS  
☐ Hepatitis  
☐ Tuberculosis  
☐ Syphilis  
☐ Gonorrhea  
☐ Chlamydia  
☐ Herpes  
☐ HIV/AIDS  
☐ AIDS  
☐ Hepatitis  
☐ Tuberculosis  
☐ Syphilis  
☐ Gonorrhea  
☐ Chlamydia  
☐ Herpes  
☐ HIV/AIDS  
☐ AIDS  
☐ Hepatitis  
☐ Tuberculosis  
☐ Syphilis  
☐ Gonorrhea  
☐ Chlamydia  
☐ Herpes  
☐ HIV/AIDS  
☐ AIDS  
☐ Hepatitis  
☐ Tuberculosis  
☐ Syphilis  
☐ Gonorrhea  
☐ Chlamydia  
☐ Herpes  
☐ HIV/AIDS  
☐ AIDS  
☐ Hepatitis  
☐ Tuberculosis  
☐ Syphilis  
☐ Gonorrhea  
☐ Chlamydia  
☐ Herpes  
☐ HIV/AIDS  
☐ AIDS  
☐ Hepatitis  
☐ Tuberculosis  
☐ Syphilis  
☐ Gonorrhea  
☐ Chlamydia  
☐ Herpes  
☐ HIV/AIDS  
☐ AIDS  
☐ Hepatitis  
☐ Tuberculosis  
☐ Syphilis  
☐ Gonorrhea  
☐ Chlamydia  
☐ Herpes  
☐ HIV/AIDS  
☐ AIDS  
☐ Hepatitis  
☐ Tuberculosis  
☐ Syphilis  
☐ Gonorrhea  
☐ Chlamydia  
☐ Herpes  
☐ HIV/AIDS  
☐ AIDS  
☐ Hepatitis  
☐ Tuberculosis  
☐ Syphilis  
☐ Gonorrhea  
☐ Chlamydia  
☐ Herpes  
☐ HIV/AIDS  
☐ AIDS  
☐ Hepatitis  
☐ Tuberculosis  
☐ Syphilis  
☐ Gonorrhea  
☐ Chlamydia  
☐ Herpes  
☐ HIV/AIDS  
☐ AIDS  
☐ Hepatitis  
☐ Tuberculosis  
☐ Syphilis  
☐ Gonorrhea  
☐ Chlamydia  
☐ Herpes  
☐ HIV/AIDS  
☐ AIDS  
☐ Hepatitis  
☐ Tuberculosis  
☐ Syphilis  
☐ Gonorrhea  
☐ Chlamydia  
☐ Herpes  
☐ HIV/AIDS  
☐ AIDS  
☐ Hepatitis  
☐ Tuberculosis  
☐ Syphilis  
☐ Gonorrhea  
☐ Chlamydia  
☐ Herpes  
☐ HIV/AIDS

## Comparison Sheet

Tribe Name (N= ) Comparison Data to Aggregate Tribal Data and National Data

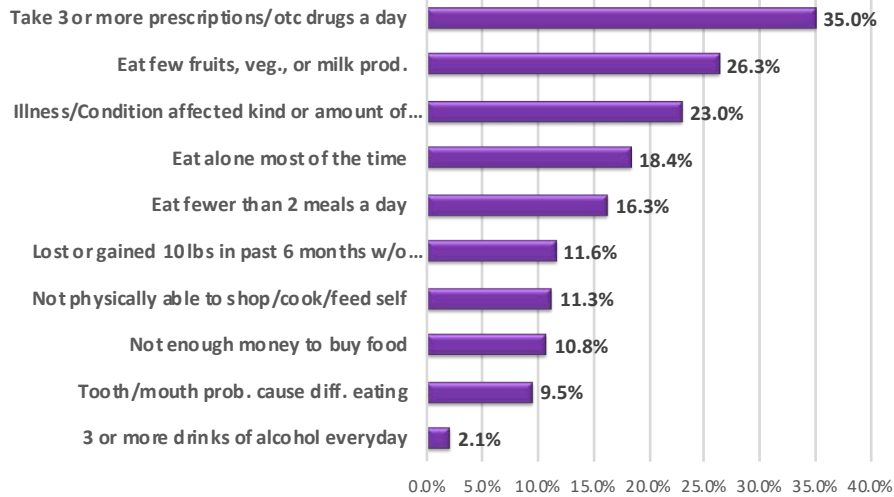
Question	Response(s)	Tribal Data (55 and over)	Aggregate Tribal Data (55 and over)	National Data (55 and over)
General Health Status				
1. Would you say your health in general is excellent, very good, good, fair, or poor?	Excellent	2.3%	6.0%	13.8%
	Very Good	9.9%	19.9%	29.2%
	Good	29.2%	39.7%	32%
	Fair	35.1%	26.8%	16.8%
	Poor	23.5%	7.6%	7.8%

## Alzheimer's, Dementia, and Disability for Native Elders Cycle VI

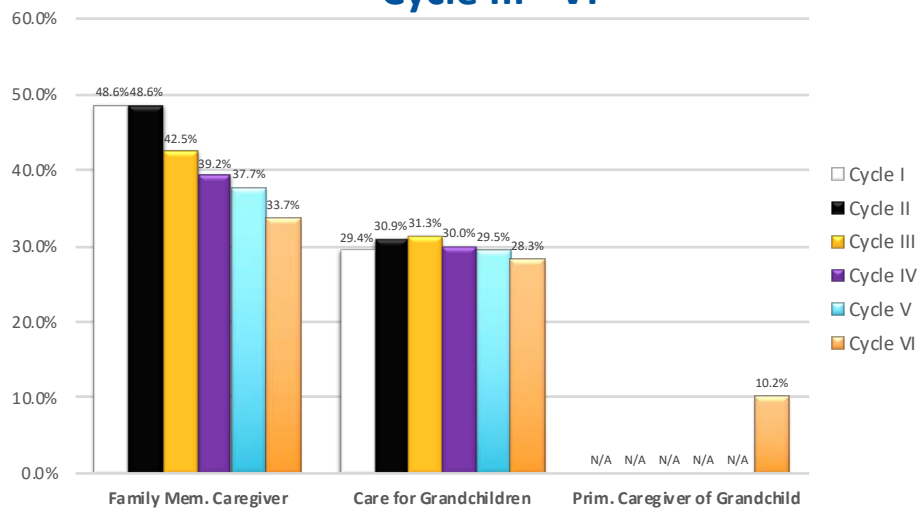




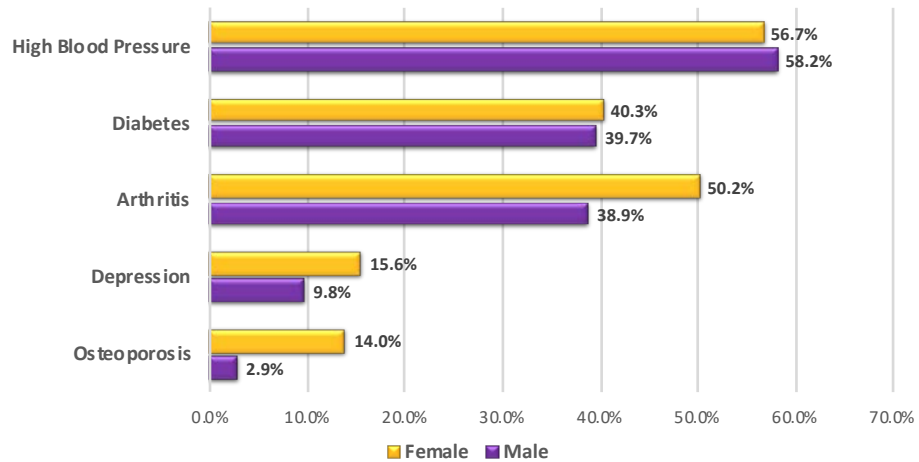
## Nutritional Health Data among Native Elders Cycle VI



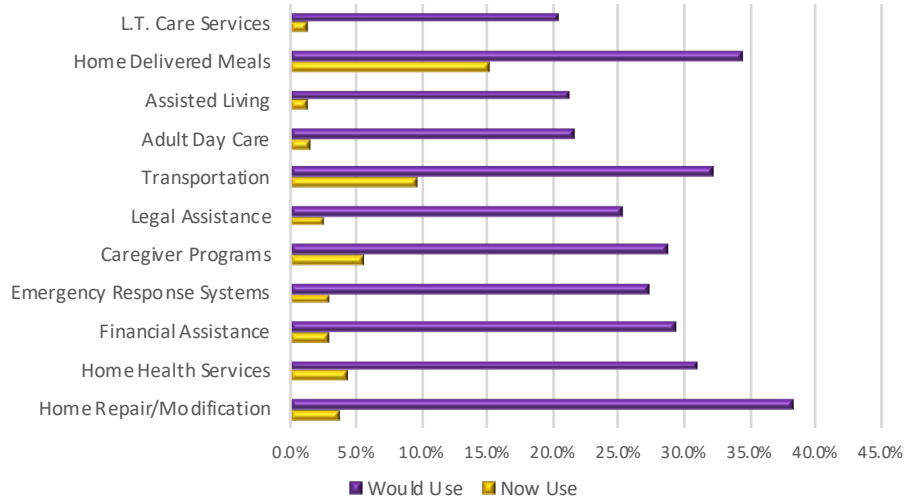
## Caregiving Data among Native Elders Cycle III - VI



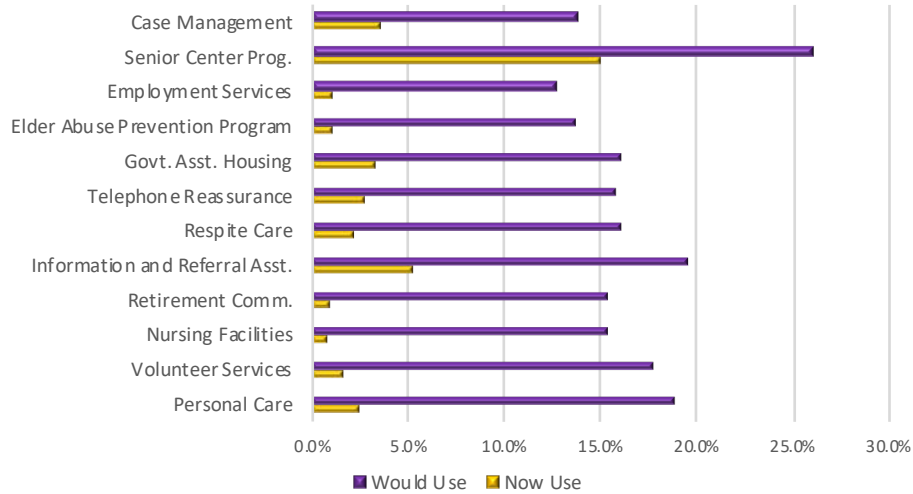
## Chronic Disease Rates by Gender among Native Elders



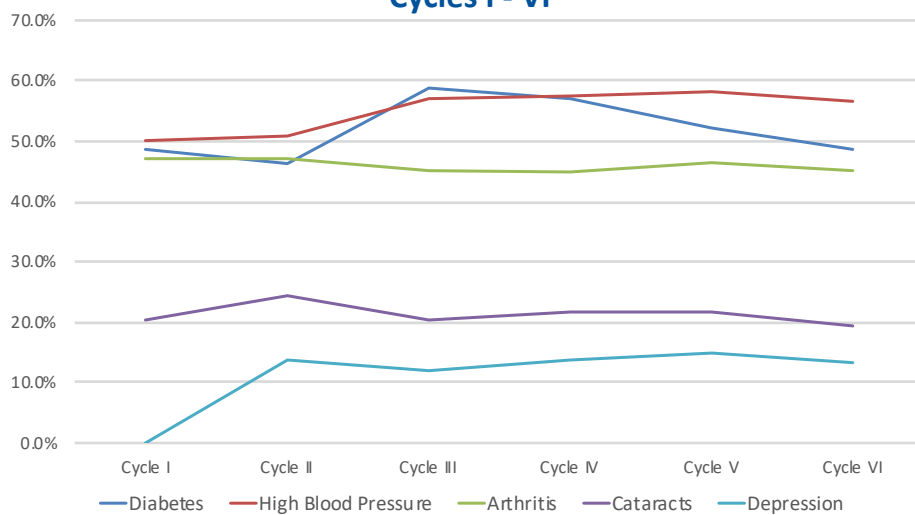
## Cycle VI Tribal Aggregate Unmet Needs (1)

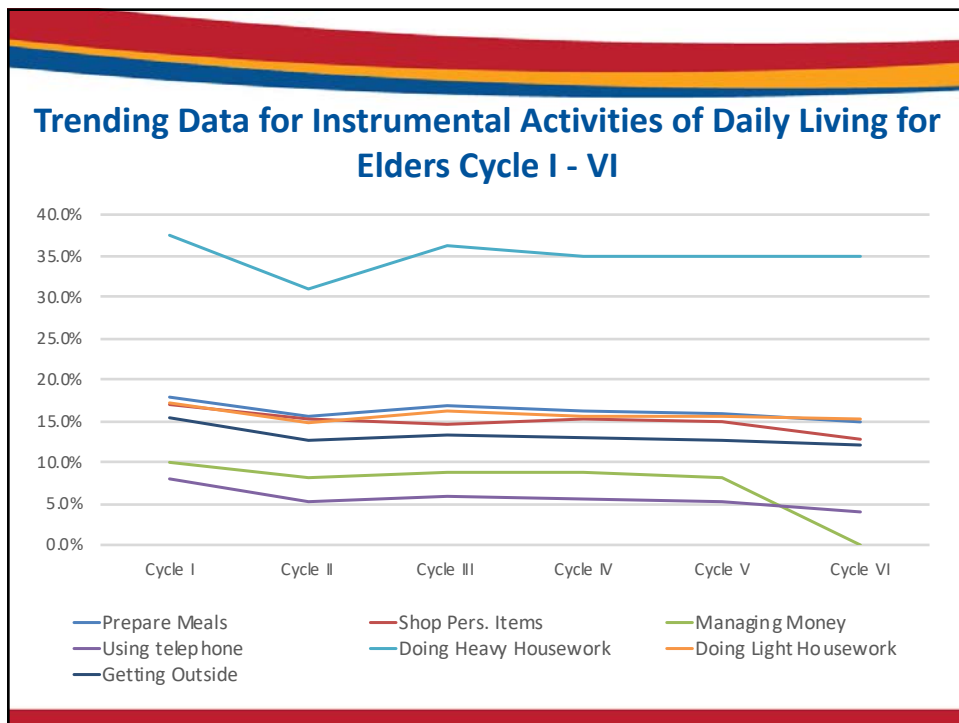
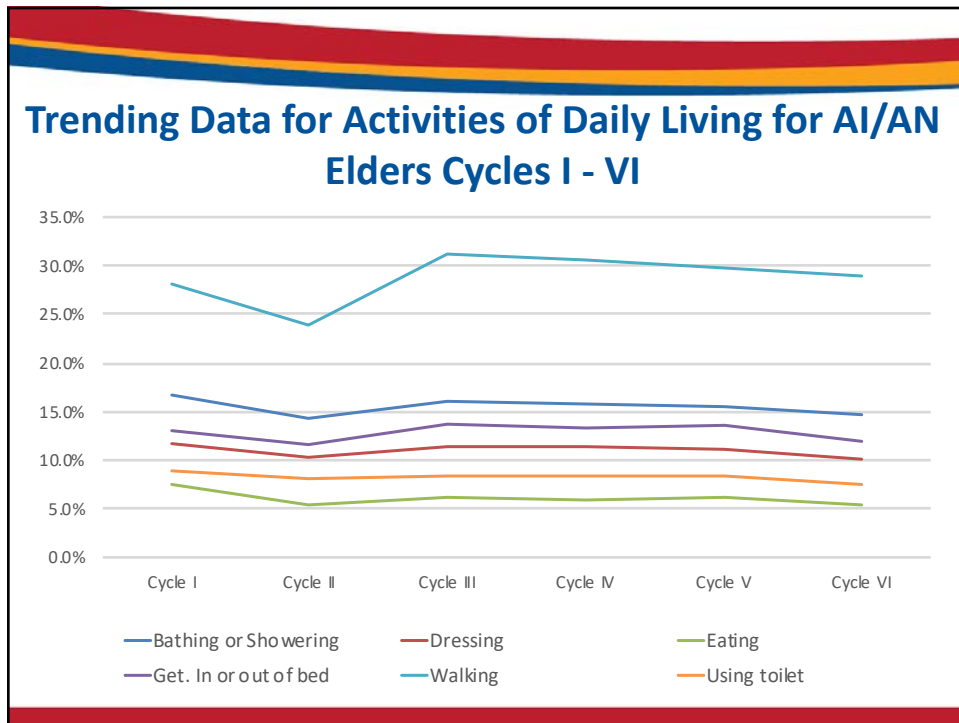


## Cycle VI Tribal Aggregate Unmet Needs (2)



## Trending Data for Top 5 Chronic Diseases among Elders Cycles I - VI








# Administration for Community Living

## **TITLE VI PROGRAM PERFORMANCE REPORT**



### **Steps in Title VI PPR Data Collection**

- Step 1:** Title VI grantees submit annual reports to ACL that include information on nutrition, supportive, and caregiver support services as well as staffing information.
  - Step 2:** The reports are reviewed by ACL staff.
  - Step 3:** Tribal officials certify that the reports are accurate.
  - Step 4:** The reports are uploaded to AGID.
- 

## Types of Data Collected in Current Title VI PPR

- Staffing information
- Nutrition services
- Caregiver support services
- Supportive services
  - Access services
  - Legal assistance
  - In-home services
  - Ombudsman services
  - Health promotion and wellness
  - Other services

## AGID: <https://agid.acl.gov/>

- Administration on Aging: AGing Integrated Database (AGID)
- The AGing Integrated Database (AGID) is an on-line query system based on ACL-related data files and surveys, and includes population characteristics from the Census Bureau for comparison purposes.
- AGID houses Title VI data going back to 2002!
- AGID does have some limitations in how you can use it, but is a good resource.

## 4 Different Ways to Access Data

Administration for Community Living  
**Aging Integrated Database (AGID)**

Home **Data-at-a-Glance** State Profiles Custom Tables Data Files Resources About

**Administration on Aging: Aging Integrated Database (AGID)**

The Aging Integrated Database (AGID) is an on-line query system based on ACL related data files and surveys, and includes population characteristics from the Census Bureau for comparison purposes. The four options or paths through AGID provide different levels of focus and aggregation of the data - from individual data elements within Data-at-a-Glance to full database access within Data Files.

Before you begin your query, please review AGID's Resources section with an "About AGID" overview, instructional videos, descriptions of data sources, and frequently asked questions (FAQs). Even experienced AGID users may find the Resources videos and documentation helpful. At any time, you may select from one of the four options below and follow the system prompts. If you need additional assistance, please complete an AGID Support request from the link found at the bottom left of every AGID screen.

**Data-at-a-Glance**  
Quick estimates in map, chart, or table form

**State Profiles**  
State-level summaries and comparisons

**Custom Tables**  
Detailed table-view feature

**Data Files**  
Download data files and documentation

**What's New**  
State Program Performance Report (SPR) Proposed Revisions for comment  
The Administration for Community Living is making available for public comment the draft State Program Performance

**Resources**  
About AGID  
Release Notes  
Data Sources

Administration for Community Living  
**Aging Integrated Database (AGID)**

Home **Data-at-a-Glance** State Profiles Custom Tables Data Files Resources About

AGID > Data-at-a-Glance [Help](#) [Share](#) [Print](#)

### Data-at-a-Glance

Data-at-a-Glance is a tool for generating quick estimates in table form, supplemented by map and chart graphical representations. Whereas other functions in AGID - State Profiles, Custom Tables, and Data Files - provide more expansive views of the data, Data-at-a-Glance is designed to examine a single data element at a time, giving the user the ability to explore the data for patterns, anomalies, or areas of interest.

To begin your query, please select the desired database from the list below:

**AoA Databases**

**State Program Reports (SPR) 2005-2014**  
Data on the supportive services programs and congregate and home delivered meals programs under Title III of the Older Americans Act, as well as the Title VII Elder Rights program.

- SPR Data-at-a-Glance
- State Profiles for National Tables

**National Ombudsman Reporting System (NORS) 2000-2014**  
Information on the efforts of Long-Term Care Ombudsmen as reported by each State Long-Term Care Ombudsman program, including data on staffing, facilities and beds, and types of complaints from residents.

- NORS Data-at-a-Glance

**Title VI Services by Tribal Organization 2002-2014**  
Information about nutrition, caregiver, and supportive services provided to Native Americans under Title VI of the Older Americans Act.

- Title VI Services by Tribal Organization Data-at-a-Glance

**Census Databases**

**American Community Survey (ACS) Demographic Data 2004-2014**  
Population and housing characteristics data from the ACS for the 60 and older population, both individually and by sex and various age groups. Tabulations are produced from the 1-Year Public Use 5% Microdata Sample (PUMS) file.

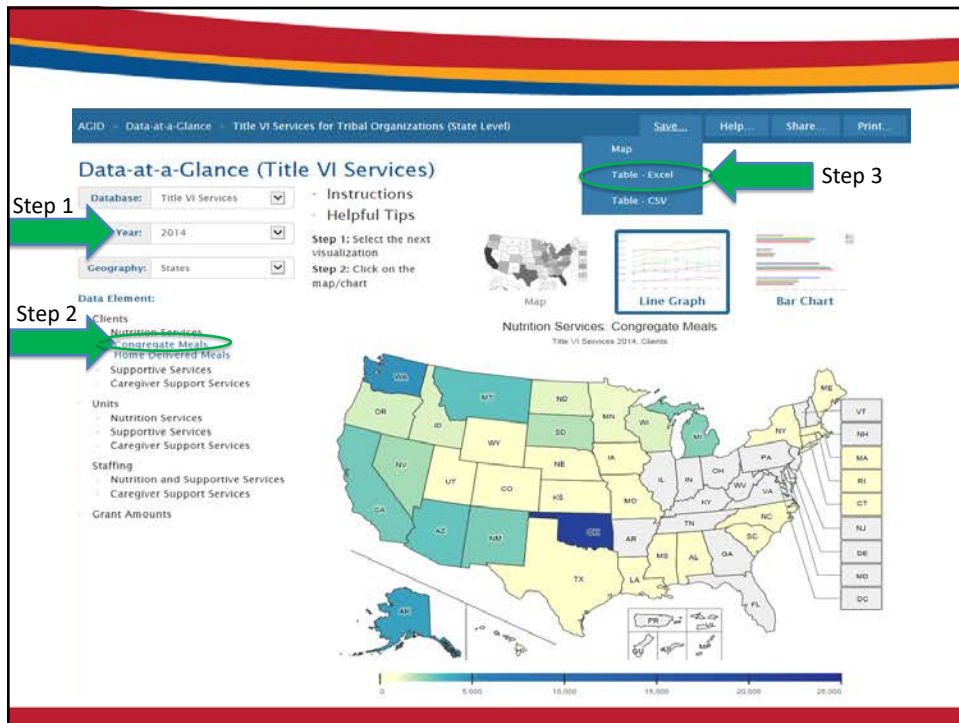
- ACS Data-at-a-Glance

**Population Estimates Data 2000-2014**  
Provides population estimates from various Census Bureau files and tools including the Census Population Estimates Program and the American Factfinder system. Rural counts and percents for 2010 are available from the 2010 Decennial Census data and can be accessed by clicking on the link under Census 2010.

- Population Estimates Data-at-a-Glance

**Census 2010**  
2010 Decennial Census population figures by age and sex for each state.

- Census 2010



Group	Geography	Congregate Meals
Total	50 States + DC	61,493
States + DC + Territories	Alabama	85
	Alaska	4,304
	Arizona	2,989
	California	2,772
	Colorado	332
	Connecticut	39
	Hawaii	530
	Idaho	1,338
	Iowa	150
	Kansas	641
	Louisiana	264
	Maine	450
	Massachusetts	240
	Michigan	2,536
	Minnesota	1,093
	Mississippi	791
	Missouri	534
	Montana	3,064
	Nebraska	431
	Nevada	2,110





Administration for Community Living  
**Aging Integrated Database (AGID)**

[Home](#)
[Data-at-a-Glance](#)
[State Profiles](#)
[Custom Tables](#)
[Data Files](#)
[Resources](#)
[About](#)



### Administration on Aging: AGING Integrated Database (AGID)

The AGING Integrated Database (AGID) is an on-line query system based on ACL-related data files and surveys, and includes population characteristics from the Census Bureau for comparison purposes. The four options or paths through AGID provide different levels of focus and aggregation of the data - from individual data elements within Data-at-a-Glance to full database access within Data Files.

Before you begin your query, please review AGID's Resources section with an "About AGID" overview, instructional videos, descriptions of data sources, and frequently asked questions (FAQs). Even experienced AGID users may find the Resources videos and documentation helpful. At any time, you may select from one of the four options below and follow the system prompts. If you need additional assistance, please complete an AGID Support request from the link found at the bottom left of every AGID screen.



**Data-at-a-Glance**  
Quick information in maps, charts, or tables from



**State Profiles**  
State-level summaries and comparisons



**Custom Tables**  
Detailed results your way



**Data Files**  
Download data files and documentation

#### What's New

State Program Performance Report (SPR) Proposed Revisions for comment  
The Administration for Community Living is making available for public comment the draft State Program Performance

#### Resources

[About AGID](#)  
[Release Notes](#)  
[Data Explorer](#)


[Home](#)
[Data-at-a-Glance](#)
[State Profiles](#)
[Custom Tables](#)
[Data Files](#)
[Resources](#)
[About](#)




AGID > State Profiles

Save
Help
Share
Print

### State Profiles

Click on the state below for profiles of state OAA programs and National tables with state-specific data.  
View a Profile of All OAA Programs, including all 50 States, DC & US Territories



 SIA Location
 AAA Location
 Tribal Organization Location

50 States + DC & Territories

Alaska
Arkansas

Illinois
Indiana
Iowa
Kansas
Kentucky

Nebraska
Nevada
New Hampshire
New Jersey
New Mexico

South Dakota
Tennessee
Texas
Utah
Vermont

## Profile of State OAA Programs: Alaska

Geography: Alaska

- State Profiles
  - All Tables
  - Part A. Population Estimates
  - Part B. Long Term Care Ombudsman Program
  - Part C. Title VI Grants in State
  - Part D. Title III Clients
  - Part E. Focal Points/Senior Centers
  - Part F. Service Profile
    - Part F. Persons Served/Service Units
    - Part F. Providers
    - Part F. Expenditures
    - Part F. Program Income Earned
  - Part G. State Unit Staffing
  - Part H. AAA Staffing (Total State)
  - Part I. Transfer Between Title III, Part B and C
  - Part K. Title VII Expenditures
- Comparisons
  - Part A. Population Estimates
  - Part B. Long Term Care Ombudsman Program
  - Part C. Title VI Grants in State**
  - Part D. Title III Clients
  - Part E. Focal Points/Senior Centers
  - Part F. Service Profile
  - Part G. State Unit Staffing
  - Part H. AAA Staffing (Total State)
  - Part I. Transfer Between Title III, Part B and C
  - Part K. Title VII Expenditures
- National Tables
  - 2011
  - 2012
  - 2013
  - 2014

State Profiles provides comparison tables or pre-populated tables of key data elements from OAA Programs for the selected state. In addition, the location of the State Unit on Aging (SUA), Area Agencies on Aging (AAA), and Tribal Organizations (when applicable) are displayed in both map and tabular form.

Using the menu on the left, select a table from the State Profiles Tables list, click on a Comparisons topic and sub-category, or select a National table with state-specific data to download.

Click on any part of the map to toggle the county labels on and off in order to see locations that may be behind a label.

Alaska is a single PSA state; therefore, there is no AAA location. The AAA symbol on the map references the location of the SUA.

▲ SUA Location
● AAA Location
◆ Tribal Organization Location

Map labels include: North Slope, Fairbanks, Denali, Yukon-Charley, Yukon-Koyukuk, Kuskokwim, Aleutians East Borough, Aleutians West Borough, Bethel, Chukotka, Ketchikan, Kodiak, Kodiak Peninsula, Lake and Peninsula, Kodiak Area Native Association, Kodiak, AK 99515, Prince of Wales, and Kodiak.

## Profile of State OAA Programs: Alaska

Home Data-at-a-Glance **State Profiles** Custom Tables Data Files Resources About

AGID > State Profiles > State Profile Comparisons > Comparisons Save... Help... Share... Print...

Return to Map

Geography: Alaska

Compare: 50 States + DC & Terri

Years: ☒ 2014 ☒ 2013 ☒ 2012 ☐ 2011 ☐ 2010 ☐ 2009 ☐ 2008 ☐ 2007 ☐ 2006

• State Profiles  
 • Comparisons  
 • National Tables

When viewing multi-year data, you may scroll a table horizontally by holding the **Shift** key and using your mouse wheel. You may also use the scrollbar at the bottom of the table.

### Part C. Title VI Grants in State

Data Element	Geography	2012	2013	2014
Number of Title VI Grantees	Alaska	41	41	44
	50 States + DC & Territories, State Profiles	256	256	264
Total Allotments	Alaska	\$4,669,907	\$4,462,911	\$4,637,566
	50 States + DC & Territories, State Profiles	\$36,642,381	\$35,039,189	\$35,305,199

Source: Grants Administration Tracking & Evaluation System (GATES), an internal HHS financial system



Administration for Community Living  
**Aging Integrated Database (AGID)**

[Home](#)
[Data at a Glance](#)
[State Profiles](#)
[Custom Tables](#)
[Data Files](#)
[Resources](#)
[About](#)



### Administration on Aging: Aging Integrated Database (AGID)

The AGID Integrated Database (AGID) is an on-line query system based on ACL-related data files and surveys, and includes population characteristics from the Census Bureau for comparison purposes. The four options or paths through AGID provide different levels of focus and aggregation of the data - from individual data elements within Data-at-a-Glance to full database access within Data Files.

Before you begin your query, please review AGID's Resources section with an "About AGID" overview, instructional videos, descriptions of data sources, and frequently asked questions (FAQs). Even experienced AGID users may find the Resources videos and documentation helpful. At any time, you may select from one of the four options below and follow the system prompts. If you need additional assistance, please complete an AGID Support request from the link found at the bottom left of every AGID screen.



**Data-at-a-Glance**  
Quick information overview about our database from



**State Profiles**  
State-level information about each state/territory



**Custom Tables**  
Detailed multi-year tables



**Data Files**  
Download data files with documentation

#### What's New

State Program Performance Report (SPR) Proposed Revisions for comment  
The Administration for Community Living is making available for public comment the draft State Program Performance

#### Resources

[About AGID](#)  
[Release Notes](#)  
[Data Sources](#)

[Home](#)
[Data at a Glance](#)
[State Profiles](#)
[Custom Tables](#)
[Data Files](#)
[Resources](#)
[About](#)

AGID > Custom Tables

[Help...](#)
[Share...](#)
[Print...](#)

## Custom Tables

Custom Tables allows users to produce detailed, multi-year tables in a step-by-step process and output the results in print or spreadsheet form. Users have the ability to select only those data elements applicable to their needs, and to further refine their results based on demographic stratifiers or geographic locations that are meaningful to their application. In addition, multiple years of data can be selected to analyze trends across time, data can be grouped by year or geography, and simple sorting tools have been incorporated to rank individual data elements across both time and geography.

To begin your query, please select the desired database from the list below:

### AoA Databases

#### State Program Reports (SPR) 2005-2014

Data on the supportive services programs and congregate and home-delivered meals programs under Title III of the Older Americans Act, as well as the Title VII Elder Rights program.

- SPR Custom Tables

#### National Ombudsman Reporting System (NORS) 2000-2014

Information on the efforts of Long-Term Care Ombudsmen as reported by each State Long-Term Care Ombudsman program, including data on staffing, facilities and beds, and types of complaints from residents.

- NORS Custom Tables
- NORS Complaints Custom Tables

#### Title VI Services by Tribal Organization 2002-2014

Information about nutrition, caregiver, and supportive services provided to Native Americans under Title VI of the Older Americans Act.

- Title VI Services by Tribal Organization Custom Tables

### Census Databases

#### American Community Survey (ACS) Demographic Data 2004-2014

Population and housing characteristics data from the ACS for the 60 and older population, both individually and by sex and various age groups. Tabulations are produced from the 1-Year Public Use 5% Microdata Sample (PUMS) file.

- ACS Custom Tables

#### Population Estimates Data

Provides population estimates from various Census Bureau files and tools including the Census Population Estimates Program and the American Factfinder system. Rural counts and percents for 2010 are available from the 2010 Decennial Census data and can be accessed by clicking on the link under Census 2010.

- State-Level Population Estimates Data Custom Tables (2000-2014)
- County-Level Population Estimates Data Custom Tables (2000-2014)
- PSA-Level Population Estimates Data Custom Tables (2000-2014)

#### Census 2010

2010 Decennial Census population figures by age and sex for each state.

- State-Level Census 2010 Custom Tables
- County-Level Census 2010 Custom Tables
- PSA-Level Census 2010 Custom Tables

ACL Administration for Community Living  
Aging Integrated Database (AGID)

Home Data-at-a-Glance State Profiles Custom Tables Data Files Resources About

AGID > Custom Tables > Title VI Services Year Selection

Share... Print...

### Title VI Services by Tribal Organization

Years Data Elements Stratifiers Geography Results

**Available Filters**  
Select "All Years" or one or more individual years for your table:

☒ All Years  
☒ 2002  
☒ 2003  
☒ 2004  
☒ 2005  
☒ 2006  
☒ 2007  
☒ 2008  
☒ 2009  
☒ 2010  
☒ 2011  
☒ 2012  
☒ 2013  
☒ 2014  
☒ 2015

**Your Selections**  
 Years  
 2002 x 2003 x 2004 x 2005 x  
 2006 x 2007 x 2008 x 2009 x  
 2010 x 2011 x 2012 x 2013 x  
 2014 x 2015 x

Previous  
 Clear  
 Save  
 Next  
 Clear All

**Data Elements**  
 Congregate Meals x  
 Home Delivered Meals x  
 Supportive Services x  
 Information About Available Services x  
 Assistance Gaining Access to Available Services x  
 Caregiver Services: Individual Counseling x  
 Caregiver Services: Support Groups x  
 Caregiver Services: Caregiver Training x  
 Caregiver Services: Lending Closet x  
 Caregiver Services: Other x

? Click on the pointer to expand and make selections.

**Step 1** (points to Years tab)

**Step 2** (points to Selections area)

ACL Administration for Community Living  
Aging Integrated Database (AGID)

Home Data-at-a-Glance State Profiles Custom Tables Data Files Resources About

AGID > Custom Tables > Title VI Services Data Element Selection

Share... Print...

### Title VI Services by Tribal Organization

Years Data Elements Stratifiers Geography Results

**Available Filters**  
Select an individual topic for your table:

☒ Clients  
☒ Nutrition Services  
☒ Congregate Meals  
☒ Home Delivered Meals  
☒ Supportive Services  
☒ Supportive Services  
☒ Caregiver Support Services  
☒ Information About Available Services  
☒ Assistance Gaining Access to Available Services  
☒ Caregiver Services: Individual Counseling  
☒ Caregiver Services: Support Groups  
☒ Caregiver Services: Caregiver Training  
☒ Caregiver Services: Lending Closet  
☒ Caregiver Services: Other  
☒ Respite

**Your Selections**  
 Years  
 2002 x 2003 x 2004 x 2005 x  
 2006 x 2007 x 2008 x 2009 x  
 2010 x 2011 x 2012 x 2013 x  
 2014 x 2015 x

Previous  
 Clear  
 Save  
 Next  
 Clear All

**Data Elements**  
 Congregate Meals x  
 Home Delivered Meals x  
 Supportive Services x  
 Information About Available Services x  
 Assistance Gaining Access to Available Services x  
 Caregiver Services: Individual Counseling x  
 Caregiver Services: Support Groups x  
 Caregiver Services: Caregiver Training x  
 Caregiver Services: Lending Closet x  
 Caregiver Services: Other x

? Click on the pointer to expand and make selections.

**Step 1** (points to Data Elements tab)

**Step 2** (points to Selections area)

ACL Administration for Community Living  
Aging Integrated Database (AGID)

Home Data-at-a-Glance State Profiles Custom Tables Data Files Resources About

AGID > Custom Tables > Title VI Services Geography Selection

Share... Print...

### Title VI Services by Tribal Organization

Years Data Elements Stratifiers **Geography** Results

**Available Filters**  
Select geographic location(s) and tribal organization(s):

- ☐ All States
- ☒ All U.S. Totals
- ☒ 50 States + DC
- ☐ 50 States + DC & Territories
- ☐ All AOA Regions
- ☐ All Tribal Organizations

**Step 1**

**Step 2**

**Your Selections**

Years  
2002 x 2003 x 2004 x 2005 x  
2006 x 2007 x 2008 x 2009 x  
2010 x 2011 x 2012 x 2013 x  
2014 x 2015 x

Data Elements  
Congregate Meals x  
Home Delivered Meals x  
Supportive Services x  
Information About Available Services x  
Assistance Gaining Access to Available Services x  
Caregiver Services: Individual Counseling x  
Caregiver Services: Support Groups x  
Caregiver Services: Caregiver Training x  
Caregiver Services: Lending Closet x

Click on the pointer to expand and make selections.

ACL Administration for Community Living  
Aging Integrated Database (AGID)

Home Data-at-a-Glance State Profiles Custom Tables Data Files Resources About

AGID > Custom Tables > Title VI Services Results

Save... Share... Print...

### Title VI Services by Tribal Organization

Years Data Elements Stratifiers Geography **Results**

**Step 1**

**Step 2**

Excel  
CSV

View an alternative version of the results.

Drag a column header and drop it here to group by that column

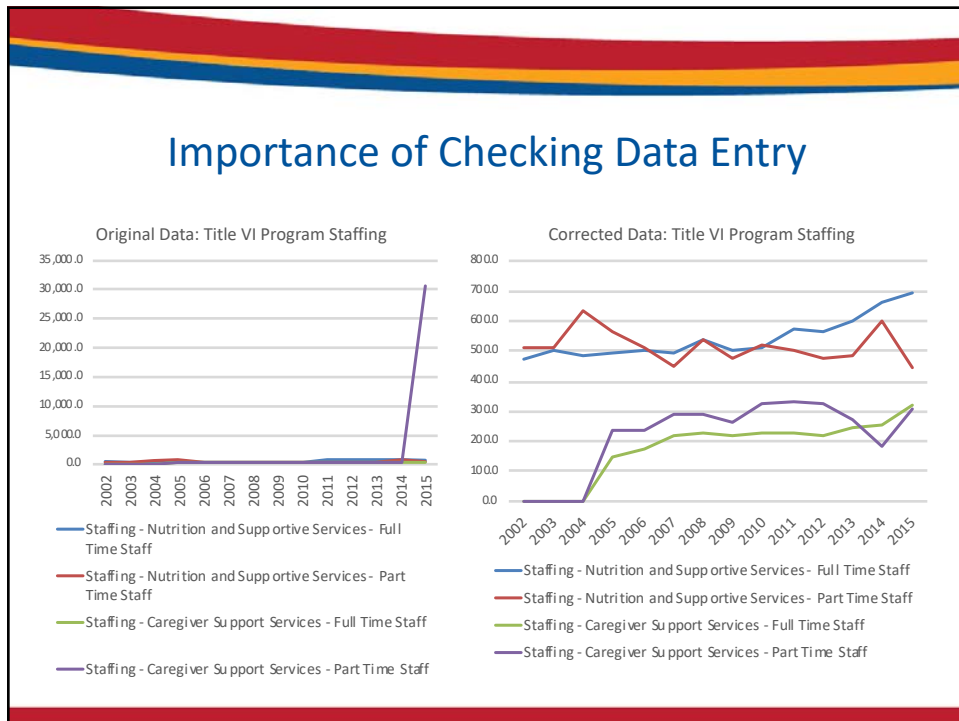
Year	Geography Group	Geography	Clients - Nutrition Services - Congregate Meals	Clients - Nutrition Services - Home Delivered Meals	Clients - Supportive Services - Supportive Services	Clients - Caregiver Support Services - Information About Available Services	Clients - Caregiver Support Services - Assistance Gaining Access to Available Services	Clients - Caregiver Support Services - Lending Closet
2002	U.S. Totals	50 States + DC	46,233	29,477	69,614	No Data	No Data	No Data
2003	U.S. Totals	50 States + DC	57,960	40,799	64,561	No Data	No Data	No Data
2004	U.S. Totals	50 States + DC	52,270	32,224	65,657	No Data	No Data	No Data
2005	U.S. Totals	50 States + DC	54,607	31,322	60,499	29,840	13,310	17,600
2006	U.S. Totals	50 States + DC	48,741	21,406	65,221	38,958	18,156	19,107
2007	U.S. Totals	50 States + DC	47,698	20,528	62,159	34,666	11,981	14,727
2008	U.S. Totals	50 States + DC	44,029	19,216	71,308	26,501	35,328	54,389
2009	U.S. Totals	50 States + DC	45,929	20,536	61,752	29,565	16,870	21,413
2010	U.S. Totals	50 States + DC	67,047	46,380	66,383	37,568		
2011	U.S. Totals	50 States + DC	46,621	22,846	71,169			
2012	U.S. Totals	50 States + DC	49,032	21,660	177,727			
2013	U.S. Totals	50 States + DC	52,048	22,846	87,943			

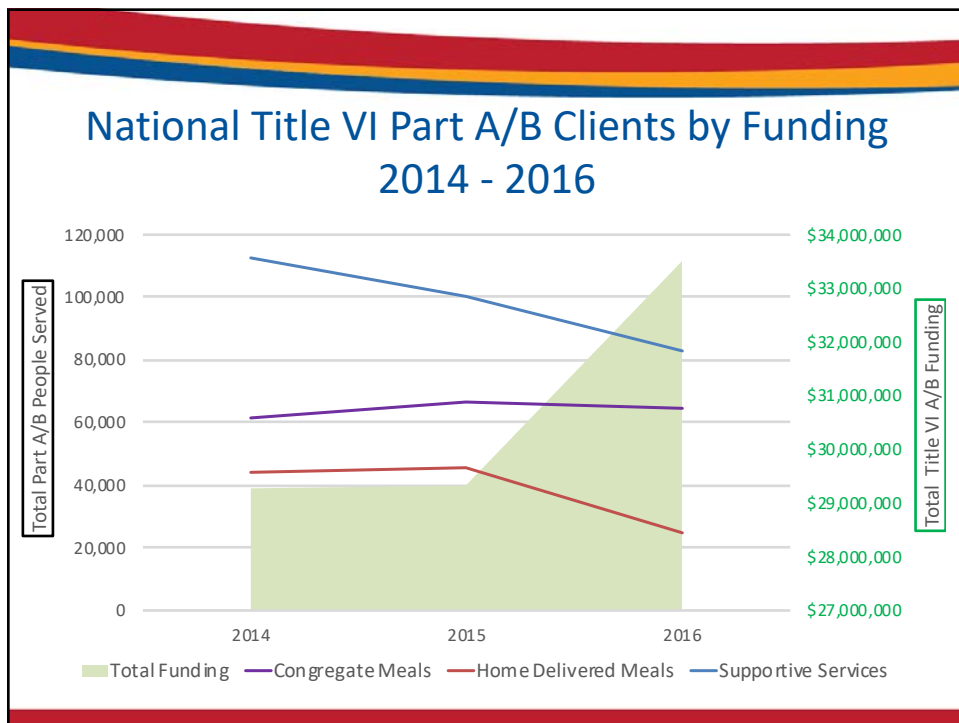
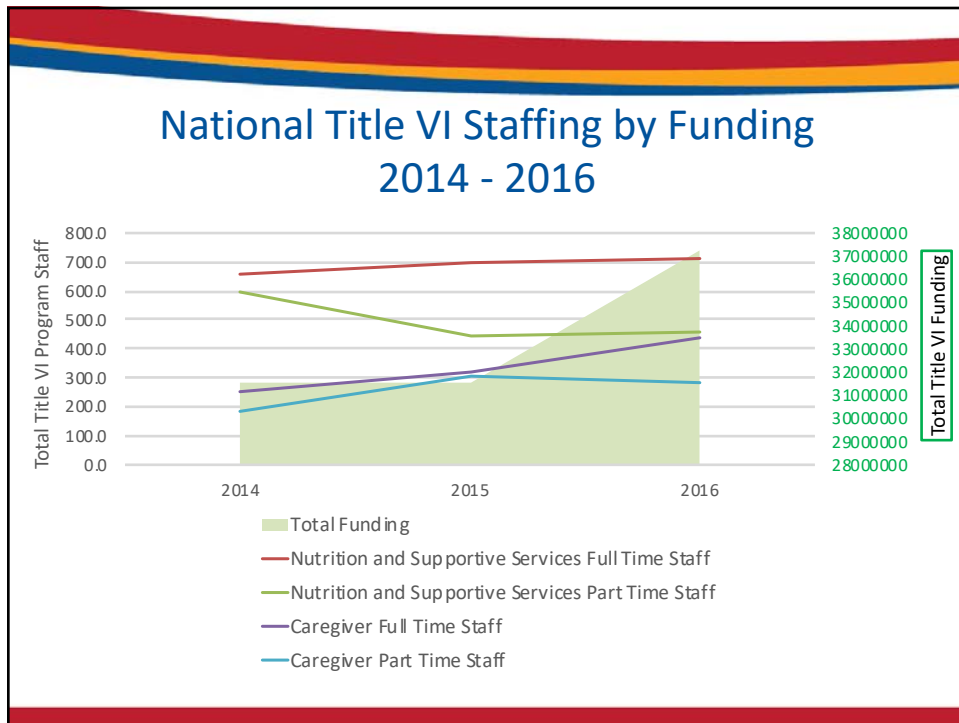
Page size: 50

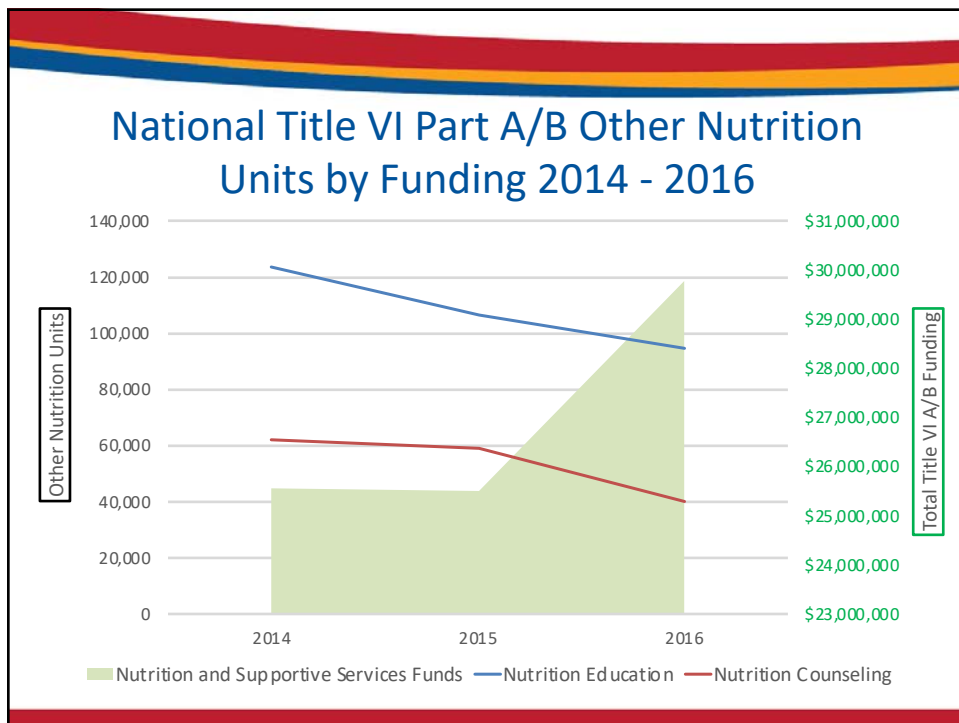
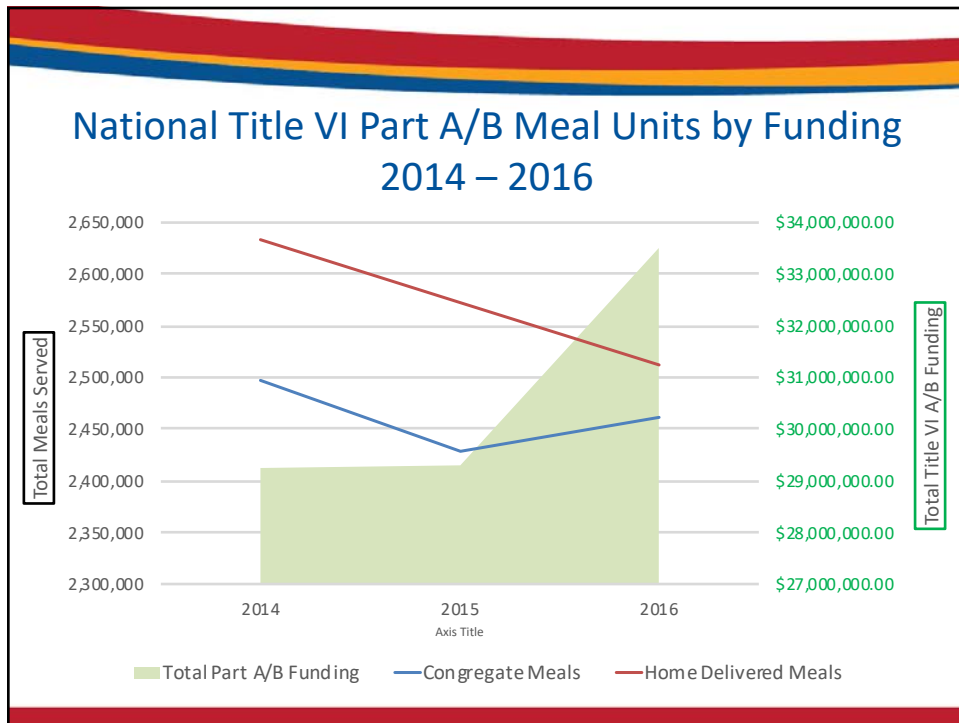
14 items in 1 pages



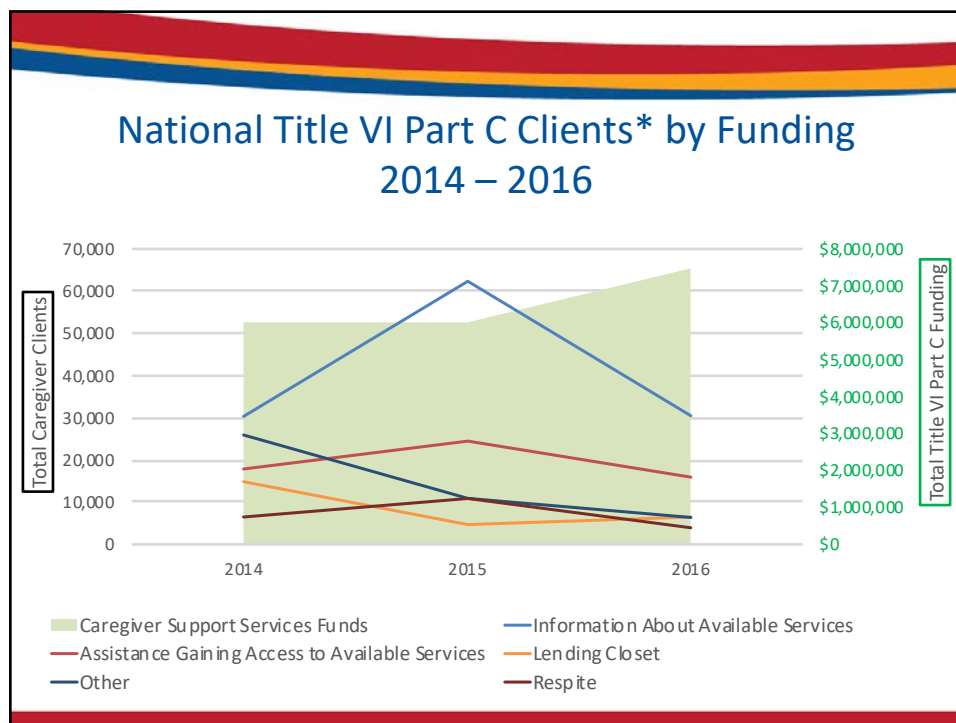
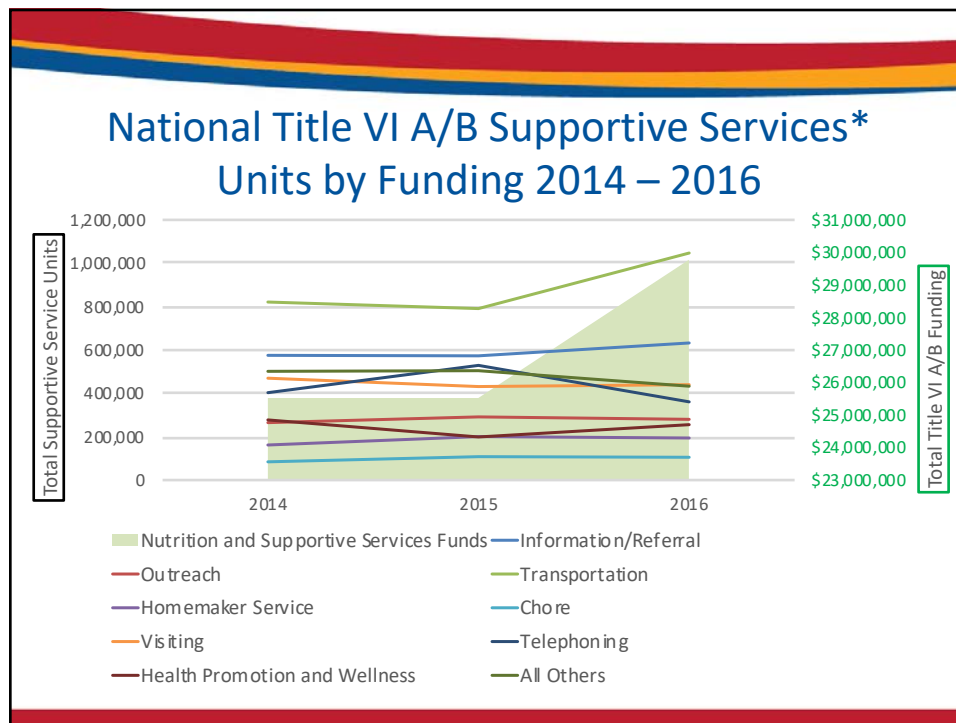
File Home Insert Page Layout Formulas Data Review View ACROBAT						
A1		Year				
	A	B	C	D	E	F
1	Year	Geography Group	Geography	Clients -	Clients -	Clients -
2				Nutrition Services -	Nutrition Services -	Supportive Services -
3				Congregate Meals	Home Delivered Meals	Supportive Services
4						
5	2002	U.S. Totals	50 States + DC	46,233	29,477	69,614
6	2003	U.S. Totals	50 States + DC	57,960	40,799	64,561
7	2004	U.S. Totals	50 States + DC	52,270	32,224	65,657
8	2005	U.S. Totals	50 States + DC	54,607	31,322	60,499
9	2006	U.S. Totals	50 States + DC	48,741	21,406	65,221
0	2007	U.S. Totals	50 States + DC	47,698	20,528	62,159
1	2008	U.S. Totals	50 States + DC	44,029	19,216	71,308
2	2009	U.S. Totals	50 States + DC	45,929	20,536	61,752
3	2010	U.S. Totals	50 States + DC	67,047	46,380	66,383
4	2011	U.S. Totals	50 States + DC	46,621	22,846	71,169
5	2012	U.S. Totals	50 States + DC	49,032	21,660	177,727
6	2013	U.S. Totals	50 States + DC	52,048	22,846	87,943
7	2014	U.S. Totals	50 States + DC	61,493	43,810	112,596
8	2015	U.S. Totals	50 States + DC	66,572	45,595	100,495

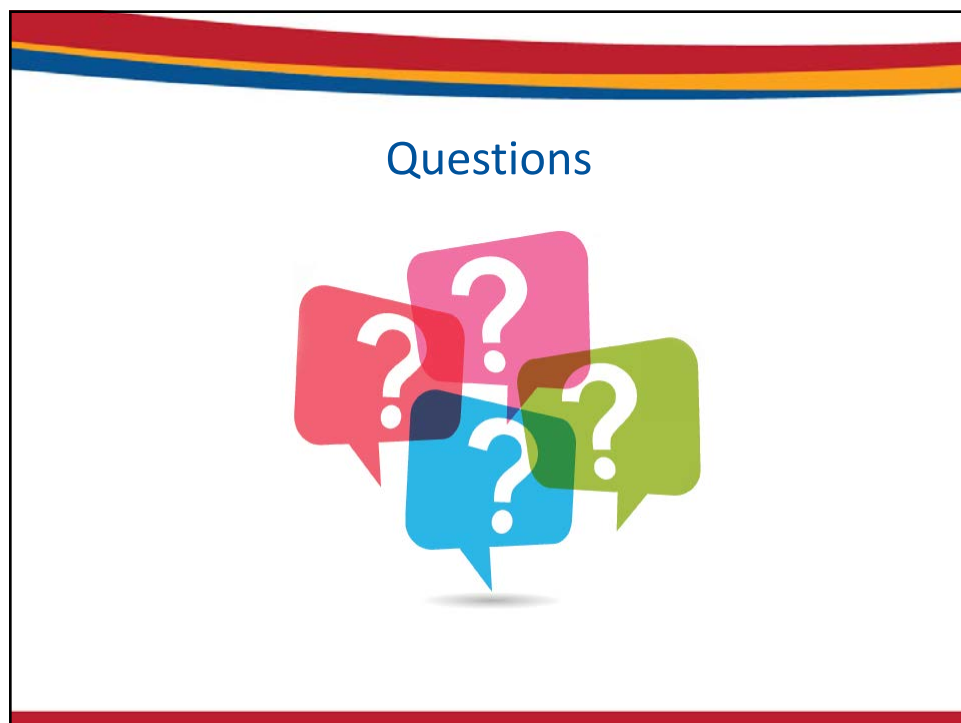
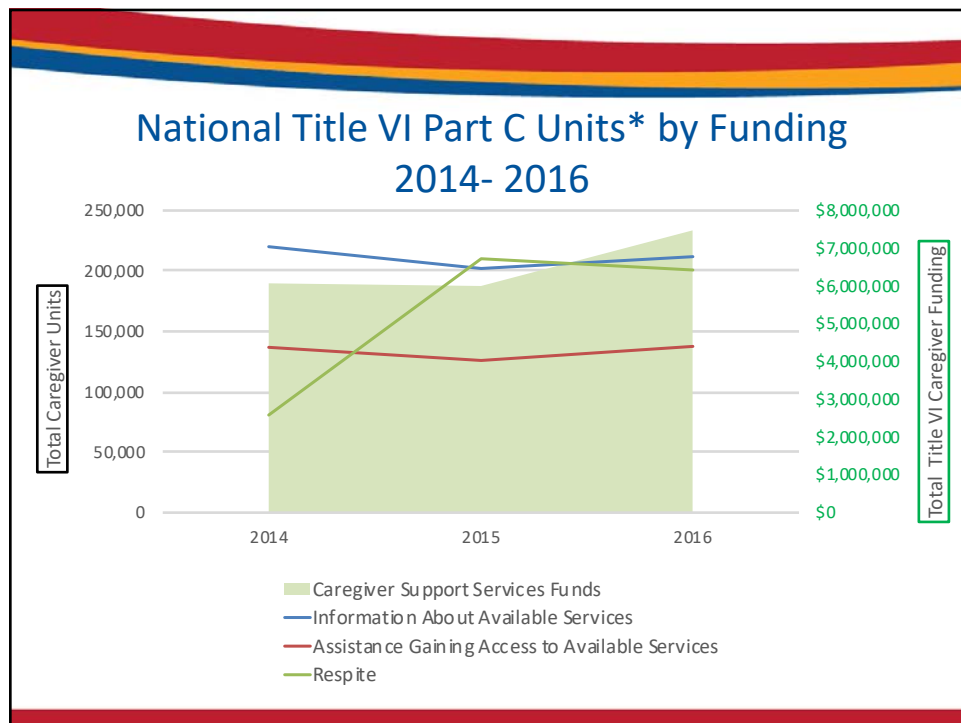












## Resources

- ION Survey Link  
[Identifying Our Needs: A Survey of Elders VII](#)
- AGID Link  
<https://agid.acl.gov/>

## Contact Information

Collette Adamsen  
[collette.adamsen@und.edu](mailto:collette.adamsen@und.edu)  
701-777-0676

Kristen (Krissy) Hudgins  
[kristen.hudgins@acl.hhs.gov](mailto:kristen.hudgins@acl.hhs.gov)  
202-795-7732

